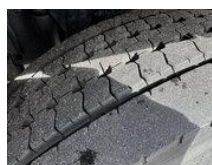


DAF CF 340 CF85-340 Press & Vacuum (Combi) 12.0 M3 , Nash Pump, Kipper

General features

Brand	DAF
Model	CF 340
Subcategory	Vacuum truck
Licence plate	BP-PN-95
Odometer reading	405.472km
Construction year	2004
Date of first registration	25-08-2004
Condition	Used
General condition	Very good
Fuel	Diesel
Emission class	Euro 3
Reference	TT11100



Characteristics

Empty weight	14.830kg
Load capacity	11.670kg
GVW	26.500kg
Length	822cm
Width	250cm

DAF CF 340 CF85-340 Press & Vacuum (Combi) 12.0 M3 , Nash Pump, Kipper

Technical specifications

Number of axes	3
Axis configuration	6x2
Transmission	Manual
Engine output	340hp

Description

Structure Tank capacity: 12000 liters = More information = Make of engine: DAF Tipper: Back = Dealer information = For more photos see: <https://www.thomastrucks.nl> Why you buy from Thomas Trucks? That choice is simple. Thomas Trucks is one of the independent trading companies worldwide in the field of used commercial vehicles. Here you can choose from an ever-changing stock of second hand trucks, tractors, trailers and trailers. Our offer includes all European brands, construction years and price ranges. Here you will always find a good vehicle for the right price! Thomas Trucks always has: - Sharp prices - Good service - Spacious, rapidly changing stock - Known quality - Decent business - We speak many languages - Accompaniment input and transport - (Export) license plate quickly arranged - Professional technical services - And more. Visit the website: www.thomastrucks.nl and view our complete range and competitive offers We are open 6 days a week. Do you need help with exporting, importing, or shipping your vehicle? Contact our sales team. Selling your current vehicle to us is also possible. We do our best to display the data as accurately as possible, however no rights can be derived from this data We can also arrange financing for you within the Netherlands.

Accessories